

Grating Fasteners

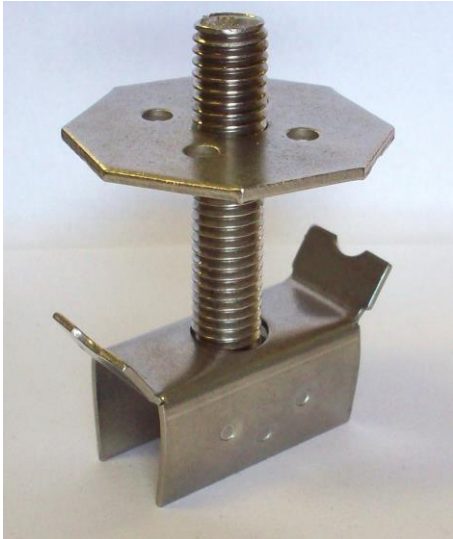
P. O. Box 610
Harvey, LA 70059



Home of the "G-Clip" ...the best grating fastener!

Product Information

Model **SSGM-1/2"** grating mount device



G-Clip™ model **SSGM-1/2"** is a stainless steel fastener used to fasten lightweight devices to 19-space bar grating. The SSGM-1/2" is designed to be used instead of J-bolts. It will withstand 1000 pounds of direct upward pull force. Due to its 316SS material, it can be used in corrosive environments.

G-Clip model GM- fastener consists of **three parts**, which are assembled at the factory into a complete installation unit, packed 20 units to a standard box.

The principal part is the **lower body** of the assembly, which is a specially stamped wing that holds captive a 1/2" 316SS nut. This lower body contacts the underside of the grating panel.

The second part is the **stamped top**, which fits flat over the grating upper surface. The top is 2" wide and has an octagon shape.

The body and top are joined by the third part, a **1/2" B8M threaded stud**. This stud is either 3" or 5" in length, depending on the job required.

INSTALLATION PREPARATION

Existing grating is used to mount this fastener. Existing grating should be firmly attached to the structure on which it is located.

TOOLS REQUIRED

Model SSGM-1/2" can be installed using a spanner wrench or tongue and groove pliers.

INSTALLATION GUIDE

Hold the G-Clip stud and octagonal top in hand, allowing the winged body portion to hang downward. Fit the body between bearing bars, and lower the unit until the body is below the grating bottom. Rotate the unit 90 degrees, and then hold upward force to engage the winged body portion onto the underside of the bearing bars. Tighten the clip by rotating the top downward onto the grating surface. Tighten with an appropriate tool to complete installation. After placing the device to be mounted onto the stud, add a lock washer and second threaded nut (sold separately) above the device. Tighten suitably.

USAGE LIMITATIONS

These devices are intended for use in mounting instrumentation in plant sites. Instrument mounting stands typically have a square plate intended to bolt to a surface, having four holes that fit over 1/2" diameter studs. Install four (or more, if needed) assemblies of model SSGM-1/2" at the suitable space intervals that will allow the plate to be fitted over the units.

HOW TO ORDER

Grating Fasteners' SSGM-1/2" fastener is sold in boxes of 20 pre-assembled units. Second nut and washer are not included.