

Grating Fasteners

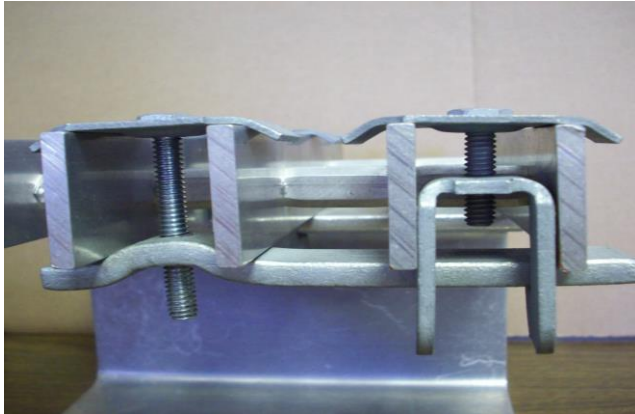
P. O. Box 610
Harvey, LA 70059



Home of the "G-Clip" ...the best grating fastener!

Product Information

Model **GP-** fastener for parallel grating panels



G-Clip™ model **GP-** is a galvanized carbon steel fastener used to fasten parallel sheets of 19-space bar grating together. The purpose of the GP- is to prevent deflection due to weight loads and eliminate trip hazards. It requires a companion model GG- to be installed correctly. They are sold either alone as GP's or in GP/GG sets. The installed GP/GG set is shown in the picture on the left.

Model GP is also available in 316SS. Please call for availability.

G-Clip model GP- fastener consists of **three parts**, which are assembled at the factory into a complete installation unit, packed 25 to a standard box.

The principal part is the **lower body** of the assembly, which has a female-thread form. The lower body portion of the clip is a die-stamped piece of galvanized flat bar. This flat bar creates a flange for the GG gripjaw. The lower body contacts the underside of both grating panels.

The second part is the **stamped top**, which fits flat on the grating top surface.

The body and top are joined by the third part, a **1/4"-20 zinc-plated threaded bolt**. This bolt varies in length, depending on the depth of the grating.

INSTALLATION PREPARATION

Parallel grating sheets require no preparation

TOOLS REQUIRED

Model GP and the GP/GG sets require only a 7/16" nut driver or torque wrench.

INSTALLATION GUIDE

The first installation step is to hold the top of the GP in hand, allowing the body portion to hang downward. Fit the body portion between two bearing bars at the edge of the first grating sheet. Lower the unit until the body is below the underside of the grating. Rotate the body portion to an orientation where the bar is perpendicular to the grating's bearing bars, with the flange projecting under the second grating sheet. Pull upward on the top, holding the lower body secure under the bearing bars, and then tighten the bolt to the proper installation torque.

The second installation step is to install a companion GG model into the second grating sheet, where the gripjaw contacts the underside of the flange created by the GP- unit. Tighten appropriately to complete the installation.

TORQUE MEASUREMENTS

Common hand-held nut drivers have a handle diameter of 1" to 1.25". This will allow for installation torque of approximately 60 inch/pounds. This is sufficient for many installation requirements. Do not exceed torque values of 100 inch/pounds, if fastener use is desired.

HOW TO ORDER

Determine the depth and layout of grating bearing bars, then call your Grating Fasteners, LLC distributor and specify GP or GP/GG models for the appropriate grating depth.

Phone (toll-free) 1-800-227-9013 (504) 361-3471 Fax (504) 362-9059
Internet: www.gclips.com e-mail to: sales@gclips.com